

## SOUTH STREET

1. This dwelling is a long way from the sea!  
What's its name? **BAY HOUSE**

2. Where does this cockerel live?  
**STRAWBERRY HILL**



3. It's 16 miles between these two places. What are they?  
**HUNGERFORD & SWINDON**

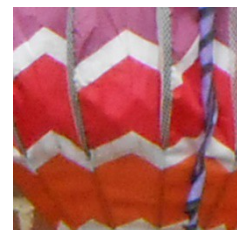
4. Where can this stone cross be found?  
**BARN COTTAGE, 15 SOUTH STREET**



5. Spin you stupid boy? **TURNPIKE**

6. Is this the only residue after the great fire of Aldbourne  
in 1777? **ONE ASH**

7. Where can this pattern be found?  
**24 CLARIDGE CLOSE**



8. It's time to find this butterfly. Where is it?  
**NOTICEBOARD OUTSIDE TIME TEA ROOM**

